



COMPANY PROFILE



A different kind of building firm

CPE Construction is far from just another construction / engineering firm.

In the early 2000's, concerned by what we felt was an industry wide shift towards price driven self interest, cost cutting at the expense of quality, blame shifting, and a general lack of accountability, we made a very conscious decision to move against the current... to go our own way.

We knew there had to be a better way of doing things, a more sustainable way. So we sat down and asked ourselves some hard questions. What were we really about, what motivated us? When push came to shove, were we only about the dollar, or did we care about other things?

Not surprisingly, we discovered money wasn't the only thing that mattered, and that what we were chasing wasn't all that complicated.

We empower our staff, on every level, to make decisions based on the best possible outcome for any given project. Not what's easiest. Not what's quickest or cheapest (although sometimes that **is** what's best for the client) but simply what will give us the best result. Depending on the client, the priorities might differ from one project to another, so knowing our clients in the first place and not only understanding their business, but caring about their long term success, is a crucial part of our working relationship.

We wanted to do great work, on great projects, with and for great people. Pretty simple really.

At this point, you're probably asking "what does all this mean to me?" Well, central to the idea of "doing our best work" is the notion of simply putting the client, or the project, first.

What Drives Us

RELATIONSHIPS FIRST

Central to the way CPE does business, is the value we place on our industry relationships, both on the client side and the supply side. We surround ourselves with like minded, quality driven, committed companies, that are striving for the same quality outcomes.

We invest time and energy building healthy, sustainable partnerships that strengthen our offering, extend our knowledge base, and generally make us better.

All this means that when the pressure comes on a project (and it usually does) we're all on the same team, moving in the same direction, chasing the same level of excellence. There's no throwing suppliers under the bus, no blame shifting... just accountability where it's needed, and everyone working together to get the job done.

WE'RE BIG ENOUGH – WE'RE SMALL ENOUGH

Sounds like an oxymoron right? Well no, we actually mean it.

We're big enough to handle even the biggest jobs, and a quick look at our project case studies later in this document will demonstrate our experience and capability in this large scale arena.

But we're also small enough to stay efficient, cost competitive, flexible and responsive – responsive to the market, as well as our clients. Being smaller than some of our competitors actually enables us to give our partners and clients more attention, better communication, and ultimately better service.

WE WANT TO WORK ON GREAT PROJECTS

We love to be challenged. We're hungry, we want to be pushed, and we want to learn. It's what gets us out of bed in the morning! We're constantly looking for new ways, better ways of doing things – new efficiencies, and new approaches.

We respond to projects that demand our best, and value the collaboration that's required to make challenging projects happen.

In short - complicated, exciting projects, that require intelligent solutions and meticulous planning? That's where we live and breathe!

All about the detail

COMMUNICATION IS KEY

Our focus on effective communication really does set us apart, and it's a natural extension of our commitment to put our clients first.

It starts with being completely transparent and honest about our processes and procedures. We're straight up about what our clients can expect, as well as the commitments we make and our own accountability. We make sure that our clients are kept in the loop at every stage of the project, that they're across all relevant decision making, eliminating any possibility of ugly surprises down the track. In short – we make sure that they know everything we know, at all times.

We also tailor our processes and communication strategy to our individual clients needs, designing a solution based on what works best for our client – right down to their preferred software and communication channels. Whether it's face-to-face, email or phone calls, we ensure that we're communicating the way that best suits our client and their business.

GETTING THINGS RIGHT – THE FIRST TIME

We concentrate on getting things right the first time, every time. We've built procedures and processes based on every single employee being empowered to do their very best work, and to be accountable for the job they do. That means we don't cut corners and we don't skip over detail. We're thorough by nature, because doing things right the first time saves us and our clients time and money.

WE'RE ON SITE MORE OFTEN

We've made a commitment to be on site, more often. Sounds simple, but given that a large percentage of our work happens in the factory, it takes a genuine commitment to be on site as often as we are. You can't manage what you can't see, so we make sure we stay on top of every job site.

EARLY INVOLVEMENT PAYS OFF

One of CPE's greatest competitive advantages, is our ability to offer advice, feedback and counsel early on in the project timeline. Often, clients will bring us into a project early in the design stage, so that we have the opportunity to leverage our knowledge and experience to look for the most efficient engineering solutions.

Critical thinking and engineering experience applied at this early stage, can lead to huge savings, and overall efficiency gains.

Good projects always involve an iterative process of design tinkering vs cost analysis, but **great** projects also invariably have **great** partnerships between the client, designers and the builders. Our strong working relationships with architects and structural engineers allow us to work hand in hand, together – to offer the best and most efficient solutions. Not only does the design process become a lot more fluid and responsive, but potential issues get identified and solved much earlier than they would traditionally. The result – literally everybody benefits.

This flows through to our quoting, where early investment of time and energy allows not only fluid cost analysis as a natural part of the design process, but also the ability to deliver detailed and accurate quotes – straight up. We take the time required, and invest in delivering meaningful and robust numbers, so that our clients can make informed decisions.

Our Services

CONSTRUCTION AND PROJECT MANAGEMENT

Our regional building arm handles commercial and industrial work. We construct retail outlets, warehouses, factories and offices. We offer a full service, including steel work, pre-cast panels, roof and hydraulic plumbing, electrical, plastering, painting, fit-outs, joinery and concreting.

STEEL FABRICATION AND ERECTION

CPE Construction cuts, folds, welds and fabricates steel to specification, in accordance with our strict quality control system. We specialise in technical architect-designed jobs but also fabricate for general commercial, industrial and large domestic projects. We offer a complete service, including technical paint systems and a full on-site erection team.

ROOFING AND CLADDING

CPE Construction complements its steel fabrication with a roof plumbing team. This package improves work flow, saves time and reduces the number of contractors working on your job.

ROOFING AND STEEL RETAIL SALES

We stock a large selection of RHS, Pipe and Flat steel, and are also able to cater for your roofing and cladding needs. Please don't hesitate to call us or come in for a quote.

Our Reach

CPE Construction's head office is perfectly situated on the border of Victoria and NSW, which enables efficient servicing of both regional markets in NSW and Victoria, as well as metro Melbourne markets in southern Victoria.



Our Team

PROJECT MANAGERS

Our Project Management Team include qualified Engineers, Project Managers and Junior Project Managers that use their combined expertise to ensure projects are run to not only meet, but exceed our customers' expectations. They are conscious of the necessity to source value for money products and supplies that are compliant with current Australian Standards.

STEEL FABRICATORS & ROOF PLUMBERS

Our Steel Fabricators and Roof Plumbers are fully qualified and experienced with the interpretation of drawings and are competent in the use of all equipment necessary for both workshop and on-site works. Our team have access to all machinery and equipment to perform their tasks.

ROOF PLUMBERS

Our plumbers are fully qualified and licensed to perform all Roof Plumbing. They're constantly updating their skill set to ensure they are on top of all plumbing standards and are trained to ensure all OH&S requirements are met to safeguard not only themselves but all people involved in the construction. They have access to all machinery and equipment necessary to perform their tasks.

APPRENTICES / TRAINEES AND TRADE ASSISTANTS

CPE Construction likes to support locals and has an established relationship with surrounding local schools supporting Work Experience Programs. By being involved in these programs we are able to identify and secure the best candidates and offer them positions within our firm. Our apprentice steel fabricators and roof plumbers are hardworking and equipped with the tools, safety training, inductions and supervision required

to perform both workshop and on-site works. They are competent in assisting with workshop fabrication and on-site maintenance and shutdown work. Our trade assistants are experienced in the operation of light and heavy vehicles, mobile cranes and working with heights.





GRAINCORP OIL REFINING TOWERS

Client: JC Butko

Duration: February 2015 – May 2016
March 2017 – January 2018

Project Value: \$4.7 Million

Project Scope: Supply and installation of structural steel, grating, hand railing and cladding to new refining towers at Numurkah Oilseeds site. The initial tower was 36m high and required a staged building sequence to allow process and electrical works to be completed. Due to safety and access concerns CPE redesigned the roof structure to enable it to be assembled and sheeted on the ground and erected as one crane lift. CPE was awarded the same scope for a second tower which although only 28m high, included 280 tonnes of steel and 2,000m² of steel grating. In addition to these two structures CPE was awarded numerous other works including extensions to existing buildings, PIR cladding and shutdown installations.



ECHUCA REGIONAL HEALTH REDEVELOPMENT

Client: Hansen Yuncken

Duration: February 2013 – January 2016

Project Value: \$2 Million

Project Scope: Supply and installation of structural steel for Echuca Hospital Redevelopment across multiple stages over a three year period. Works performed included connection to operating hospital and complex molecular facade, early works structural steel and pre-cast panel supply. Installation was also completed prior to award of the main contract.

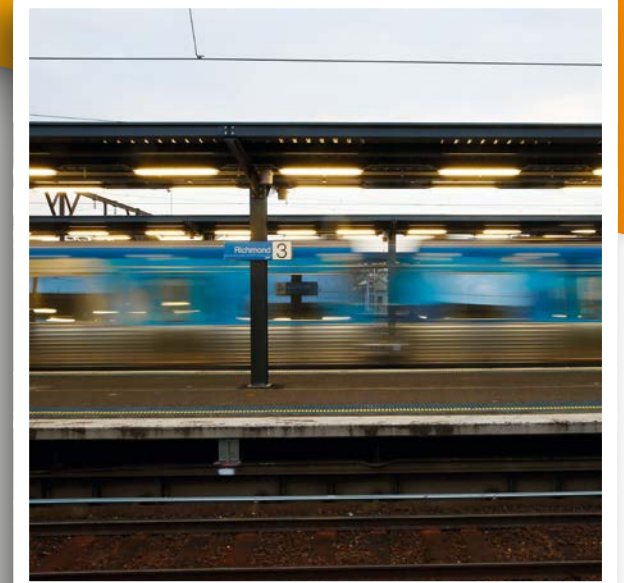


AMMUNITIONS FACTORY REDEVELOPMENT

Client: Lend Lease

Duration: October 2015 – August 2016

Project Scope: Supply and installation of structural steel, metalworks and cladding for the redevelopment of ammunitions factory.



RICHMOND STATION CANOPIES

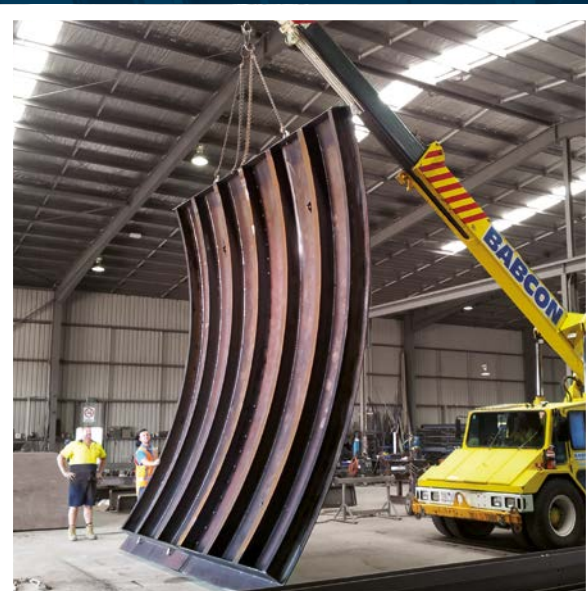
Client: Coleman Rail / John Beever

Duration: May 2015 – Dec 2015

Project Value: \$770,000

Project Scope: Supply, fabrication and installation of structural steel and cladding for additional platform canopies, including staging of works across multiple platforms within a very constrained and high profile sight. Due to high traffic through station site works were performed under direct supervision by MTM adjacent to live rail lines, during partial station closures and overnight to minimise impact to transport infrastructure.

Project Case Studies



RADIAL IRRIGATION GATES

Client: AWMA - Water Control Solutions

Duration: November 2014 – January 2015

Project Value: \$400,000

Project Scope: Supply, fabrication, painting and shipping of Stoplogs, Radial Gates and Storage Frames for New Zealand irrigation project, including mild steel, stainless steel and UHMWPE plastic components. Largest gates were 5m x 5m x 5.5m with a rolled plate and UB face and had to be trial assembled in our workshop before being broken down to fit into containers for transport.



ECHUCA LIBRARY

Client: Circon Constructions Pty Ltd

Duration: November 2011 – February 2012

Project Value: \$500,000

Project Scope: Supply, fabrication and installation of structural steel for new library including feature curved plant platform screen wall.



SOUTHLAND STATION

Client: Coleman Rail

Duration: December 2016 – June 2017

Project Value: \$700,000

Project Scope: Supply, fabrication and installation of structural steel and cladding for new train station adjacent to Southland Shopping Centre. CPE was awarded the contract due to our ability to meet a constrained time frame and our relationship with the builder. In addition to sub-framing for the platforms CPE also constructed station buildings and curved canopies above the platforms.



INDUSTRIAL REFRIGERATION WORKSHOP & OFFICES

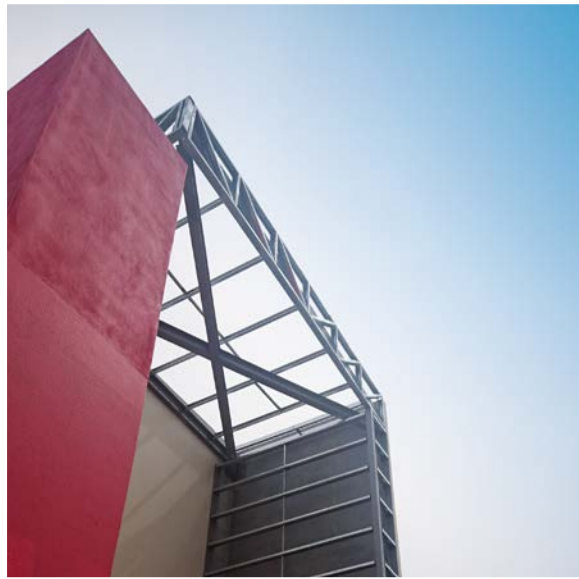
Client: RBR Refrigeration

Duration: June 2016 – February 2017

Project Value: \$1 Million

Project Scope: Project manage and construct workshop and office building including PIR cladding to front office and facade.

Project Case Studies



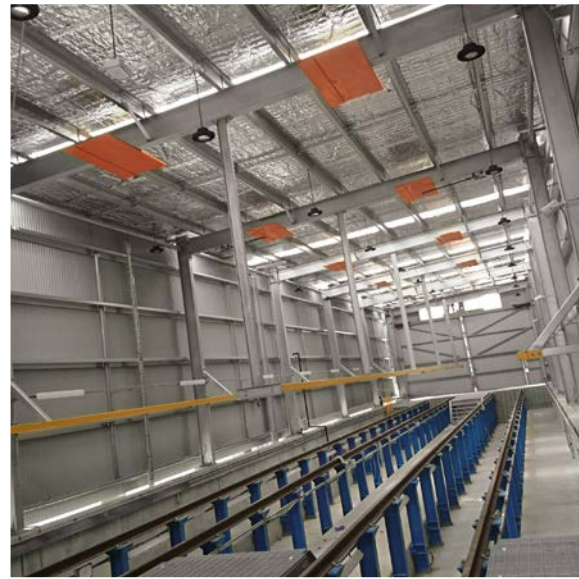
WAGGA WAGGA MARKETPLACE

Client: Mainbrace Constructions Pty Ltd

Duration: September 2015 – May 2016

Project Value: \$780,000

Project Scope: Supply and installation of structural steel for Marketplace expansion within very tight confines of existing site. Majority of steelwork was installed via crawler crane.



PRESTON TRAM WORKSHOP

Client: Coleman Rail

Duration: February 2014 – March 2016

Project Value: \$1.4 Million

Project Scope: Supply, fabrication and installation of structural steel and cladding for redevelopment of Preston Tram Workshops. Works were conducted in an operational tram depot / workshop and included both construction of new buildings, extensions to existing building as well as infill walls and cladding of existing structures. In addition to these main works CPE completed metal works including storage / lifting frames for the tram bogies and operable gate / walkway components to allow safe access to tram roofs for maintenance.



10,000m² EXPORT & PACKING FACILITY

Client: Legacy Packing

Duration: August 2016 – July 2018

Project Value: \$3 Million

Project Scope: Project manage and construct 10,000m² packing shed from concept design to lockup, with continuing extension works as the site grows.



ONE77 VIEW STREET DEVELOPMENT

Client: Fairbrother Constructions

Duration: Apr 2016 – Apr 2017

Project Value: \$425,000

Project Scope: Supply, fabrication and installation of structural steel and metalworks for mixed use development in the heart of Bendigo. Working within a very tight site CPE was required to complete the project over 7 stages in order to retain access for cranes. We also utilised our experience in cladding to draft, supply and install custom perforated panelling to form facades, screens and barriers throughout the building.

Project Case Studies



FONTERRA STANHOPE FACTORY REDEVELOPMENT

Client: George Rydell Constructions

Duration: July 2016 – November 2018

Project Value: \$1.5 Million

Project Scope: Supply and installation of 8,000m² of roof, wall and soffit sheeting for factory expansion project. Due to the tight programming required this included advising on design details and numerous works being added to scope. In addition to sheeting on the new building CPE also sheeted extensions to existing buildings, replaced existing roofing using temporary roof safety equipment and supplied and installed multiple kit sheds.



BALLARAT LINE UPGRADE

Client: Lendlease Engineering & Coleman Rail (JV)

Duration: June 2018 – August 2019

Project Value: \$7.5 Million

Project Scope: Supply, fabrication and installation works along the Ballarat to Melbourne Rail Line including; structural steel, insulated panel roofing, perforated aluminium cladding, fibre cement sheeting and aluminium cassette cladding.

Initially brought on board to provide structural steel for Rockbank, the first of five station rebuilds, CPE ended up a preferred sub contractor, working on all five station builds, and taking responsibility for multiple facets of the project. Simultaneously working with separate construction and project management teams, across all 5 builds in the line upgrade, CPE were able to offer an integrated solution, with a single point of contact - something that other construction companies simply couldn't provide.



CAULFIELD GRAMMAR BUS SHELTER

Client: Civilex Victoria

Duration: December 2016 – February 2017

Project Value: \$175,000

Project Scope: Construction of structure and cladding for school bus shelter, including working closely with builder and architect from concept design stage, to ensure buildability and cost effectiveness of structure without compromising design intent. By utilising one multi-skilled crew we were able to streamline the process of installing structural steel, PIR panels and multi-cell fibreglass wall sheets and skylights to both meet a demanding timeframe and provide a quality finish to an architectural focal point of the campus.



MELBOURNE FREIGHT TERMINAL

Client: Coleman Rail

Duration: May 2015 – Jul 2015

Project Value: \$300,000

Project Scope: Supply and installation of 90m x 12m x 8m cold rolled frame storage shed, including supply of structure, cladding and roller shutters within an operating rail freight terminal. By leveraging our position with fabrication and erection experts as well as utilising our experience working on rail stations and depots, we were able to meet a very demanding time frame to deliver this project.

Project Case Studies



CPE Construction

3718 Murray Valley Hwy

Cobram VIC 3643

Phone: 03 5872 2156

info@cpeconstruction.com.au

www.cpeconstruction.com.au